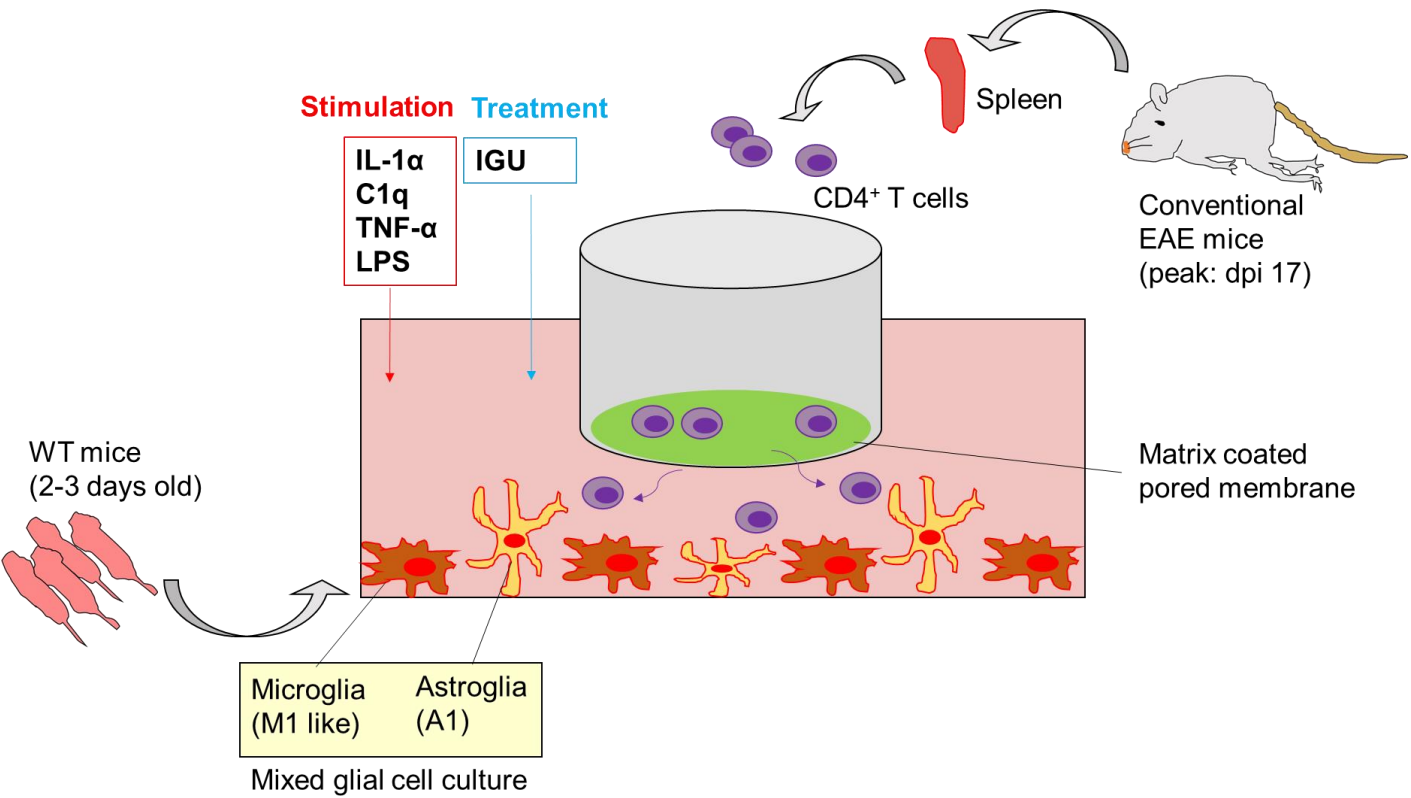
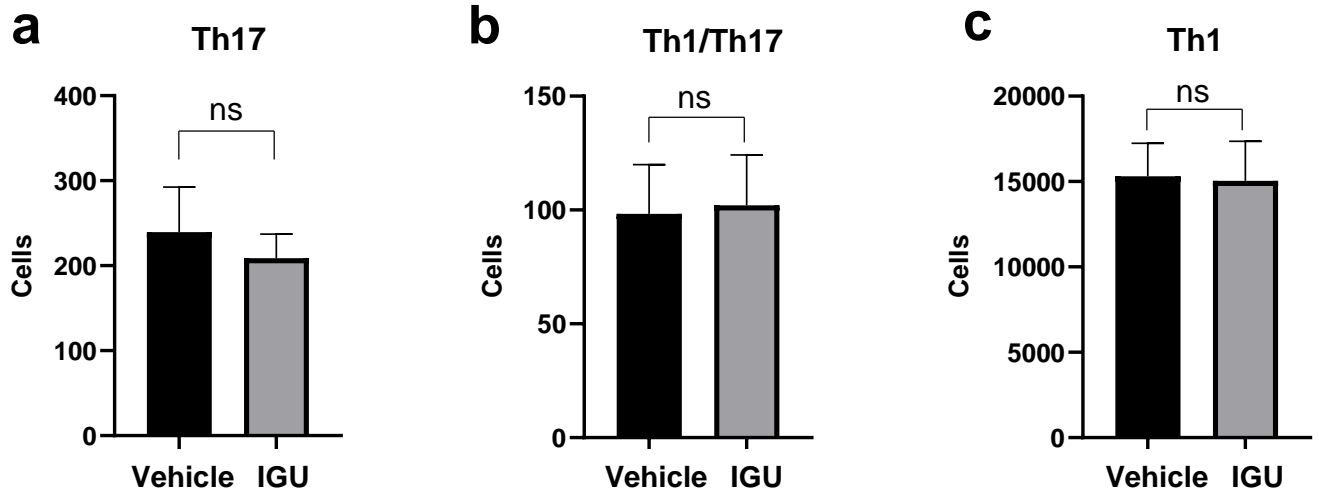


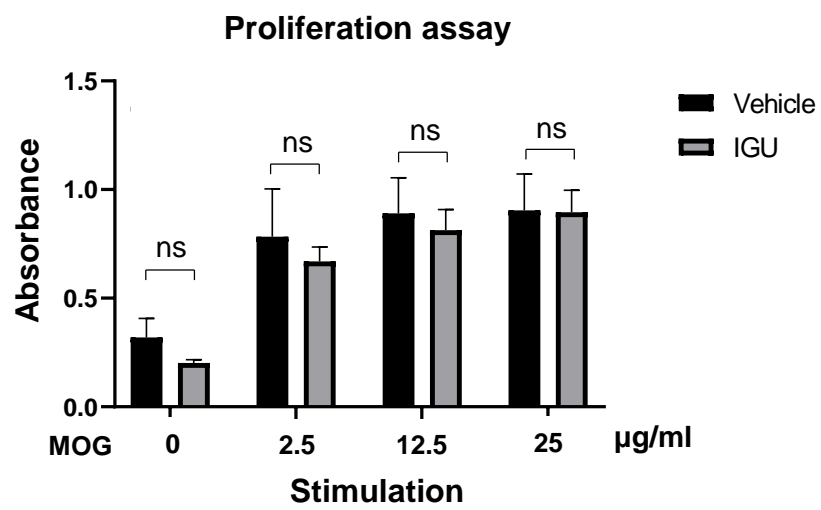
Figure S1



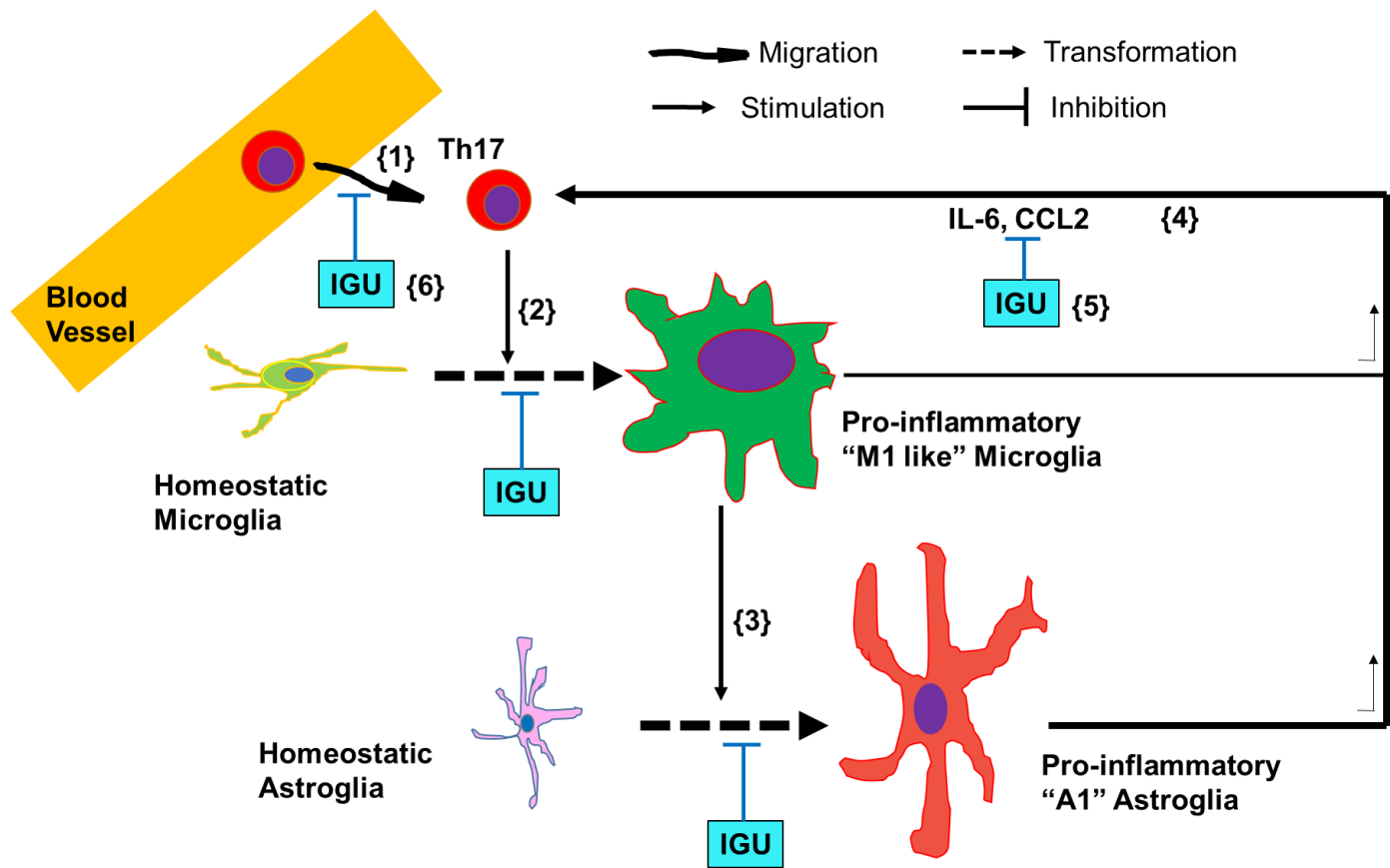
**Figure S2**



**Figure S3**



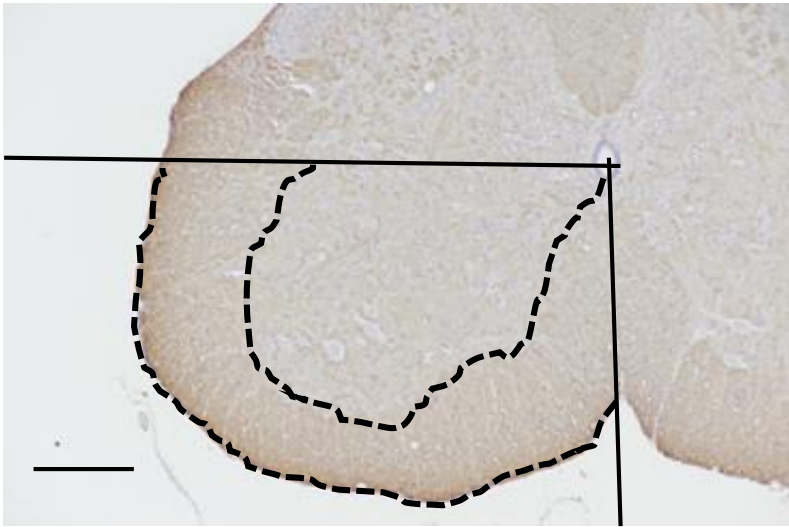
**Figure S4**



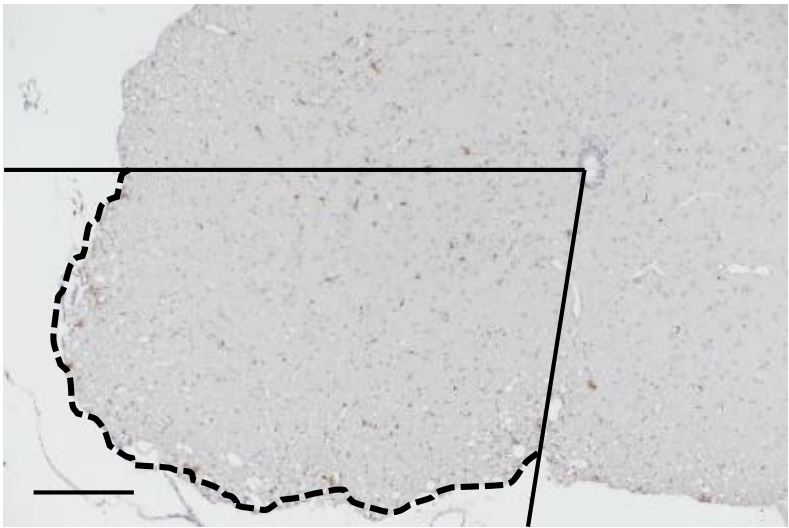
**Figure S5**

**DAB staining**

**a (all)**



**b (Iba-1)**



**Table S1**

Antigen	Clone	Host	Dilution	Incubation temperature	Incubation time	Source
MBP	Monoclonal	Mouse	1:200	4° C	Overnight	Santa Cruz
CD3	Polyclonal	Rabbit	1:500	4° C	Overnight	Abcam
F4/80	C1:A3-1	Rat	1:100	4° C	Overnight	Abcam
GFAP	G-A-5	Mouse IgG1	1:500	4° C	Overnight	Sigma
Iba-1	Polyclonal	Rabbit IgG	1:500	4° C	Overnight	Wako
C3	11H9	Rat	1:50	4° C	Overnight	Hycult Biotech
S100A10	Monoclonal	Rabbit	1:50	4° C	Overnight	Abcam
iNOS	Monoclonal	Mouse	1:50	4° C	Overnight	Santa Cruz
Arg-1	43-81	Mouse	1:100	4° C	Overnight	Santa Cruz
IL-17A	Polyclonal	Rabbit	1:1000	4° C	Overnight	Abcam

**Table S1.** Antibodies used in this study

A common buffer was used for each antibody (5% normal goat serum + 1% bovine serum albumin in 50 mM Tris buffer).